



Judgement of the employment by systematic data collection method

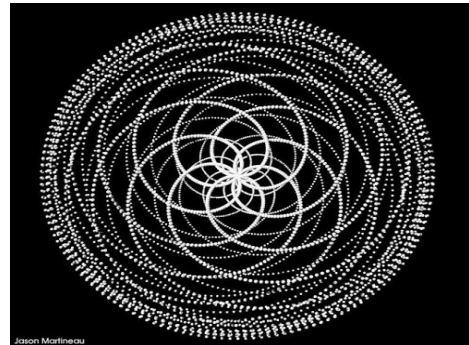
Zsuzsanna DABASI HALÁSZ – Eszter SIPOSNÉ NÁNDORI – Katalin LIPTÁK'
assistant professor junior assistant professor Ph.D. student
 University of Miskolc,
 Faculty of Economics,
 Institute of World and Regional Economics

Szeged, 19-21.11.2009

¹My research has supported by the "Közösen a Jövő Munkahelyeiért" Foundation



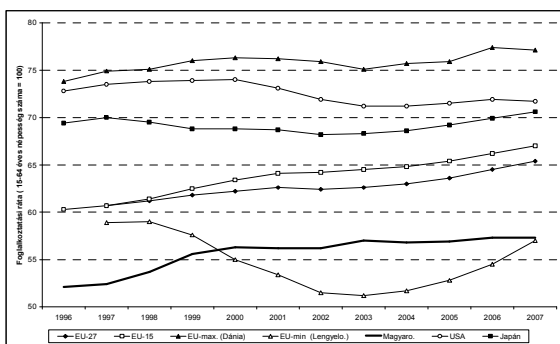
Policy → Strategy → Public mind
 on the labour market



Zsuzsanna Murthieu



Employment rate in Hungary and in the EU, 1997-2007



Source: Belyó Pál ECOSTAT



Taking into account environmental effects the strategy of certain interests understood as a means of validation (Korompai 1995)

DIAGNOSIS

- Disorder of conceptions
- Often varying definitions of concepts
- Social dissatisfaction
- Unefficient instruments of employment policy

A part of the SOLUTION

- The removal, and simplification of the conceptual confusion



The official term use should be reflected in the perception of society

Social consensus necessary for effective labour market policy, this is a more transparent conceptual system

1. Knowledge of the concept using of the society
2. Reviewing the official terms
3. Offering the conceptual system transformation and consolidation



Knowledge of the society view is complicated, because the human and material resources are meanly available by a research.

The aim is to develop methods of application of a better efficiency than traditional interviewing.

To do this, our institute has tried to present an effective research method. We would like to introduce a future research project.



Systematic Data Collection

- Developed in the 1980's Susan C. Weller, A. Kimball Romney in the USA
- Each informant is asked the same set of questions diminishes sample size
- Useful for studying attitudes and beliefs at the beginning: informal exploratory interviewing to define the area of inquire – free listing
- Later: formal methods to measure accurately the phenomena under consideration



Free listing

- To find how respondents define the boundaries of the domain of interest
- A domain may be defined as an organized set of words, concepts or sentences
- The items included in the final study depends on
 - the purpose of the study;
 - the frequency of the items mentioned in the free listing;
 - the type of formal data collection format to be used in the final study.



Defining Sample Size

Consensus theory: the number of informants needed depends on

- the average level of competence
- the confidence level – 95%
- the minimum rate of questions we would like to classify correctly



Minimal number of informants

Proportion of Questions	Average Level of Cultural Competence				
	0.5	0.6	0.7	0.8	0.9
0.95 confidence level					
0.80	9	7	4	4	4
0.85	11	7	4	4	4
0.90	13	9	6	4	4
0.95	17	11	6	6	4
0.99	29	19	10	8	4
0.99 confidence level					
0.80	15	10	5	4	4
0.85	15	10	7	5	4
0.90	21	12	7	5	4
0.95	23	14	9	7	4
0.99	*	20	13	8	6

* Well over 30 informants needed
Source: Susan C. Weller, A. Kimball Romney: Systematic Data Collection



Formal methods

- Pile sort
 - used to get similarity among a large number of objects
- Triads
 - used to collect similarity or ordered data;
 - three items are presented to the informant at a time and he/she picks the one most different from the other two
- Rating scales
 - to collect ordered data
- Balanced incomplete block designs
 - used to shorten and simplify triad and paired comparison
- Sentence frame
 - when the items in a domain are characterized by a variety of features



The method was tested by Eszter Nándori (2008)

- The test aimed to explore the concept of poverty
- Two methods of research:
 - systematic data collection and
 - traditional large sample used for the interviews.

The two methods had the same results.



SDC and the employment policy

- Who is considered to be unemployed ?
- What does social aid exactly mean?
- What is the difference between the short-term unemployed and the long-term one?



Conclusion

- Our recommendations are the following:
- This method is very useful in social reseraches.
 - We would like to carry out this research to analyse employment.



Thank you for your attention!

liptak.katalin@uni-miskolc.hu